



# 2013 Clean Up Report



The Friends of Claytor Lake, inc.

January 31, 2014



# Table of Contents:

## **2013 Clean Up Report:**

History.....

2013 Clean Up Work .....

2013 Results .....

Clean Up Day.....

Fish Habitat.....

2014 Logistics .....

Maps .....

2014 Estimates .....

# History:

## FOCL

The Friends of Claytor Lake (FOCL's) mission statement states FOCL is dedicated to preserving and protecting the quality, sustainability, and tranquility of the environment of Claytor Lake for all. FOCL obtained 501(c)(3) status in 1999 initially and permanently in 2005. Clean up is an integral part of our mission.



## History & Equipment

In 1992 FOCL began clean up in response to Peak Creek becoming blocked by debris and running red in color. FOCL began with

volunteers and open boats hauling out trash and debris.

These dedicated few evolved into a major operation through the dedicated efforts of many volunteers and partners. In

2012 our current effort included a four person crew working

with 2 barges holding roll-off dumpsters, a conveyor sitting atop

a third barge, small salvage boat, and a small v-hull fishing boat.

The crew works in the water with chain saws clearing woody debris and trash from the shore.

The crew saws up large debris, using the conveyor to load it into the dumpster roll-offs, which are later emptied by truck at 3 separate unloading areas. Trash, tires, and other objects are raked out, picked up and bagged, and transported to county landfill facilities provided by Pulaski County.

Clean up is funded from many sources including Pulaski County, American Electric Power, and FOCL donations from a variety of sources. Clean up at Claytor Lake serves 2100 lake affected residents along with the estimated 453,743 visitors to the Claytor Lake State Park and public boat landings plus those from private marinas annually. The average dumpster roll-off weighs an estimated minimum of 15 tons with water logged woody debris. In addition, 100 trash bags equals a full roll-off at an estimated 4-5 tons.



## Previous Year Totals:

2012: 147 Roll-Offs, 301 Trash Bags, 46 Tires, 4 Docks, and 3 55 Gallon Barrels

2011: 234.5 Roll-Offs, 388 Trash Bags, and 86 Tires

2010: 209 Roll-Offs, 294 Trash Bags, and 52 Tires

2009: 103 Roll-Offs, 646 Trash Bags, and 123 tires

Each year is accompanied by other abandoned docks, appliances, barrels, styrofoam, and other miscellaneous items. This was accomplished at a cost of \$31 per ton.

# 2013 Clean Up Work:

The first weeks of clean up were spent in finalizing repairs from 2012 equipment and painting our “push boat”, the Miss Pulaski County. She had not been overhauled and painted since we have owned her.

In 2013 as we began clean up operations in April performing repairs and maintenance on our equipment, During winter floods, our small roll-off barge floated on shore and came down on a stump punching a hole in the thin aluminum bottom. This barge was not repairable and was scrapped for recyclable materials. After much investigation and study by FOCL, with assistance from Pulaski County and AEP, it was decided that a larger new barge and an excavator were the answer to bringing clean up into the modern age. In addition to extending the length of the season we are able to clean, having this equipment greatly increases the safety of our crew by lessening the time working in the water with chain saws.



In 2013 an agreement was reached that the County would purchase the equipment and AEP would lease the barges back to pay them off. To insure that this equipment was ideal, two 10'x41'x5' barges were purchased and combined as a 20' x 41' x 5' debris storage barge. A Caterpillar 308E excavator with an extended boom arm, hydraulic thumb on a 2' bucket, padded tracks, offset boom and front blade, was leased by the county for FOCL's use on the new barge to remove large debris. By the beginning of the 2014 clean up year beginning in March, the county will have a purchased a used similar excavator. .

Prior to the new equipment, the crew worked in the water with chain saws clearing woody debris and trash from the shore. The crew saws up large debris, using a conveyor on floats to load it into the dumpster roll-offs on barges, which were later emptied by truck at 2 separate unloading areas. Trash, tires, and other objects are raked out, picked up and bagged, and transported to county landfill facilities provided by Pulaski County. With the new equipment, the excavator picks up all the large debris, loading it on the larger barge, eliminating much of the need to work and saw debris in the water.

The smaller woody debris is put on the conveyor and loaded directly into the roll off. Large debris is unloaded from the barge by the excavator into a 30 cu.yd. roll-off. All debris is off loaded to a roll off truck at two locations on the lake, Harry DeHaven Park and Big Hole Hollow abutments.

Other equipment improvements made this year include fabrication of two removable aluminum work platforms (4' wide x 5' long) which can be attached on the conveyor barge on each side of the conveyor. These platforms allow the crew to guide debris onto the conveyor when the water is too cold to work in and also enables removal of debris in deep water situations.

In addition to the equipment purchased by AEP and Pulaski County, FOCL purchased a new 40 horsepower motor for our flat bottom boat to replace the motor stolen last year. Also, a loader was needed to push up and control the burn pile and keep the road open at the AEP Big Hole Hollow debris storage/burn area. Previously, as well as this year, we have borrowed a loader from H.T. Bowing Equipment. This year FOCL received an older loader as a donation. After minor repairs, the loader was ready to use. FOCL also maintained the road into Big Hole, purchasing and spreading 5 loads of stone. More grading and stone will need to be added in the spring.

## 2012 Clean Up Results:

For comparison, clean up in 2012 accomplished removal of **147** loads of woody debris weighing approximately **2,318** tons total, **301** bags of trash weighing approximately 3 tons, 46 tires (some with wheels), 4 docks, 5 logs, and 3 55 gallon barrels. 24 locations were cleaned on Claytor Lake with the addition of 11 new sites previously not serviced. (reference #33-#43 on 2012 Clean Up Spreadsheet). This accumulated in a total expenditure of **\$77,163.46** and **\$34.95 cost per ton** for our 2012 Clean Up Program. The crew worked in the water from June 12th through October 31st. This work period was abbreviated due to equipment problems at the beginning of 2012 season.

## 2013 Clean Up:

There was plenty of trash and debris to be cleaned up in 2013 as the lake had two flood events bringing an unprecedented amount of trash and debris into Claytor. The first was in February and the second event during July 4<sup>th</sup> week, just after our Second Annual All Lake Clean Up Day. We began the year in April with completion of 2012 equipment and boat repairs and painting. Our first week of actual lake clean up was May 15<sup>th</sup>; however, our crew also sawed up approximately 3 roll-off loads of wood debris on land at DeHaven Park which had been removed from the water by the park's equipment.. PSA then hauled the debris to our Big Hole Hollow burn site. We began at Harry DeHaven Park which was slammed with debris from the floods. We worked on the banks of the swim area while waiting on repair, inspection and delivery of the roll off truck from Pulaski County for our

use. Clean up continued until Christmas with the last week of December being spent winterizing, maintaining, and pulling equipment.

We continued with our Volunteer Clean Up Coordinator and the organizational set up developed last year for our employees. We had a crew of 4-5 employees. From May until August 8, we worked with only one roll off barge and the conveyor, as in 2012. The new equipment (large barge with excavator) was received and put into use on August 8. With the new equipment and milder weather, the crew continued to work removing debris through December 2013. The barge with the excavator removes large items and the conveyor follows with the crew bagging trash and conveyor removing small woody debris. In addition we had only two pull out locations available, both in the mid-lake area. The first two weeks of January 2014 were spent burning two years worth of woody debris (approximately 452 roll-off loads) that was removed.

### 2013 Clean Up Expense Breakdown

CATEGORY	EXPENDITURES	TOTAL
Repairs	\$ 15,227.85	
Parts	\$ 4,408.54	
Gas	\$ 14,784.23	
Payroll	\$ 56,880.12	
Supplies	\$ 2,573.33	
Insurance	\$ 2,887.20	
	<b>Total Clean Up:</b>	<b>\$ 96,761.27</b>

### 2013 Clean Up Hours

MONTHS	HOURS
April	336.50
May	455.75
June	539.50
July	677.25
August	548.50
September	742.50
October	713.00
November	482.50
December	508.25
<b>Total:</b>	<b>5,003.75</b>

### 2013 Clean Up Results:

Clean up production report for the 2013 season which was extended thanks to the additional equipment and support provided to FOCL by AEP and Pulaski County resulted in removal of: **305**- roll-off loads of wood debris (**4,575 tons**), **380**- bags of trash (**18.25 tons**), 15- 55 gal. barrels, 85- tires (most with steel wheels), 3- propane tanks, 1- 750 gal. tank, 25- abandoned docks/ramps, and 2- refrigerators. 33 locations were cleaned, some multiple times due to the repeated flooding, high flow, and lake level changes. These record numbers are due to having new equipment enabling more efficient and extended operations. Clean up costs were **\$96,761.27** with an average **\$21.15** cost per ton. This does not include wheel, tires, tanks, barrels, and docks.

## Monitoring and Inspection:

Another change this year was the joint monitoring and monthly inspection of the lake by FOCL and AEP. These inspections occurred every month with a team from FOCL and AEP with occasional inclusion of Pulaski County. The lake was visually inspected from the water from Allisonia to the Dam to determine priority cleaning areas and progress. This process was found very useful and will continue in 2014

This year many donations were sought and received from businesses to support FOCL's 2013 clean up operation. Gatorade donated all the Gatorade for our crew, Walmart donated numerous gift cards, Virginia Eagle donated bottled water, Conrad Brothers Marine donated repair, launch, and storage facilities, Valley Welding donated discount repair and fabrication services, SOVA Crane Company donated a crane to unload the barges. Pulaski County and McCreedy Lumber donated trucks to transport the barges from South Carolina.

## 2013 Clean Up Day:



The morning started off gloomy with a sky full of clouds and rain at Claytor Lake's Harry DeHaven Park to kick off the second annual All Lake Clean Up Day by FOCL. Shortly after the first few volunteers arrived, skies began to dry up, blue was being seen over the cliffs at Claytor Lake, and the Clean Up Day Began!

Jackson & Valerie Beamer, Cheri Strenz, Larry Moore, and Laura Walters all gathered to begin cleaning up Claytor Lake and accepting bags that residents, boaters, and volunteers brought into Harry DeHaven Park. Harry DeHaven public boat launch getting a good cleaning as well as Mattern and Palmer Voorhees on their sea doo helping clean up shoreline.



The Friends of Claytor Lake brought in 107.1 WPSK for a 2 hour live remote getting everyone in the listening areas to come on our and help clean this beautiful lake. The Waterway Cafe was launched and floating donating ice cream to volunteers turning in bags as well as our FOCL Barge and the Miss Pulaski were out accepting bags with two of our clean up crew, Tony Stammers and Richard Meredith, taking time on their weekend to help out.

Not to even begin to mention the mammoth job Virginia Shoreline did filling up their pontoon boat and other boats full of bags and other sunken items. Jamie Riggins and his crew pulled off the record for one haul of our Clean Up Day!

## 2013 Clean Up Day Results:

178 Bags of Trash  
11 Tires  
14 Tires with Wheels  
2 Truck Tires with Wheels  
1 Boat Floorboard  
1 Metal Strap  
20 large and small pieces of styrofoam  
10 plastic chairs  
1 refrigerator  
3 buckets (5 gallon size)  
1 plastic bucket  
2 buoys  
1 55 gallon drum  
1 white 5ft pipe  
1 message in a bottle (more to follow...)



### **Estimated over 10 tons of trash from Claytor Lake!**

The Friends of Claytor Lake could not have accomplished any of this without the support and dedication of our volunteers, our Board of Directors, Our fantastic supporters of AEP, Pulaski County, VDGIF, VDEQ, VDCR, Coast Guard Auxiliary, Virginia Eagle Distributors, and Virginia Shoreline.

Dumpster Divers today: Mike & Carol Hoffman, Darryl Sarver, Larry & Irene Killough, John Johnson, Mike Mcleod, Jan Woodward, Jackson & Valerie Beamer, Cheri Strenz, Larry Moore, Ranny Akers.

Clean Up Day Neighborhood Captains:

Amy Hunter - Little Wytheville  
Jim Kelly - Blackberry Lane  
Chris Meade - Peak Creek  
Larry Bandolin - Cecil's Chapel  
Jan Woodward - Cecil's Chapel  
Virginia Ash - Cabinland  
Larry Moore - Lakeview  
Jackson Beamer - Claytor Lake Estates  
Judy Nelson - The Cliffs & Redwood





Fran Baldwin - Hidden Valley  
Cheri Strenz - Woods on the Lake, Felts Hollow, Smith Hollow  
Sara Metcalfe - Texas Hollow  
Stu Vaught - Twin Coves  
John Johnson - Merry Point  
Bill Cunningham - Lakeland  
Laura Walters & Jeff Arnold - Dublin Hollow  
Jeanie Jones - Dam area, West  
Danny & Lynn Morris - Waterway Cafe

Chris Doss for all his help at the Claytor Lake State Park

Ronnie Nichols for all his work with Pulaski County and donating the dumpsters for our event.

Harold Chrisley for allowing FOCL to utilize the Shop-eez parking lot at Lowman's Ferry Bridge

And, of course, a huge thank you to the FOCL supporters, residents, boaters, fishermen, skiers, sea doers, and everyone that jumped on board and made 2013 three times the clean up day than last year.

## Fish Habitat Project:

Working with AEP, Virginia Department of Game and Inland Fisheries, and Virginia Bass Federation Nation, FOCL crew and volunteers assisted one day with distributing fish habitat including spider blocks and felled trees and tree bundles in Claytor Lake to promote fish habitat and breeding areas.



In 2014 we plan to begin clean up the first of March. Again, new equipment will enable us to begin our season earlier and end our season later. The budget below is the proposed budget. This represents a 70% increase to accommodate a longer working season (March-December) and increase in fuel costs and repair of equipment.

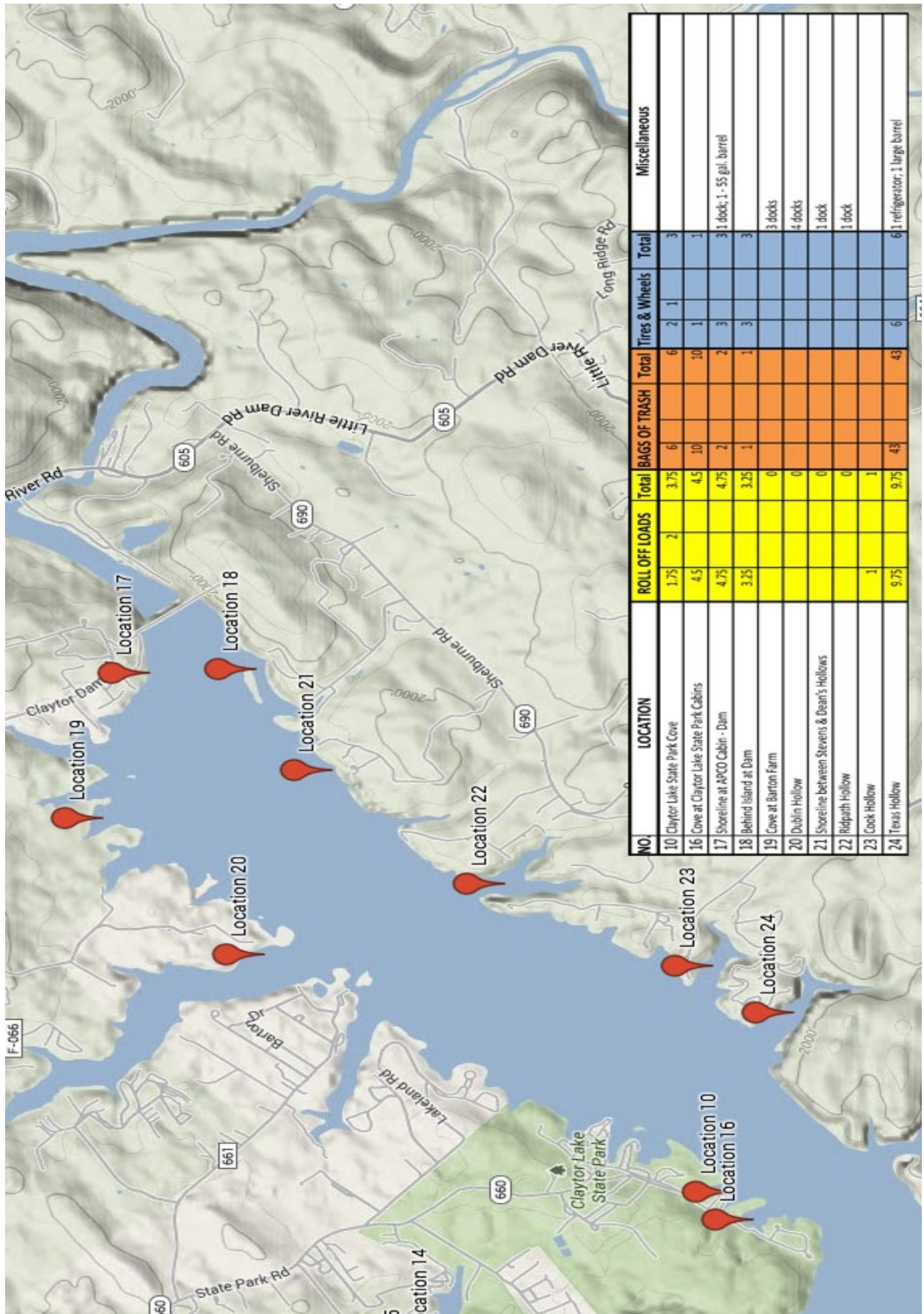
FOCL intends to acquire a rake section for the front of the barges (10'4" wide X 20'8" long X 5' depth) which will enable debris removal in more shallow water and also facilitate loading and unloading on steeper slopes if necessary. The barge will be larger (20' x 51' x 5') which will also provide more debris storage area.

One of the goals FOCL worked on in 2012 that will continue, is to locate an abutment or pull out and burn area above the bridge on Claytor. This will enable us to clean in that area and assist in keeping the main channel open. Currently we are only working below the bridge. The abutment/burn area we lost in 2012 was just below the bridge. In addition having a pull out in this area will save both time and money as the push to Harry DeHaven or Big Hole Hollow is long and expensive in terms of fuel and labor. FOCL will continue to work with Pulaski County and AEP as well as the lake community on this endeavor to achieve the best solution for all.

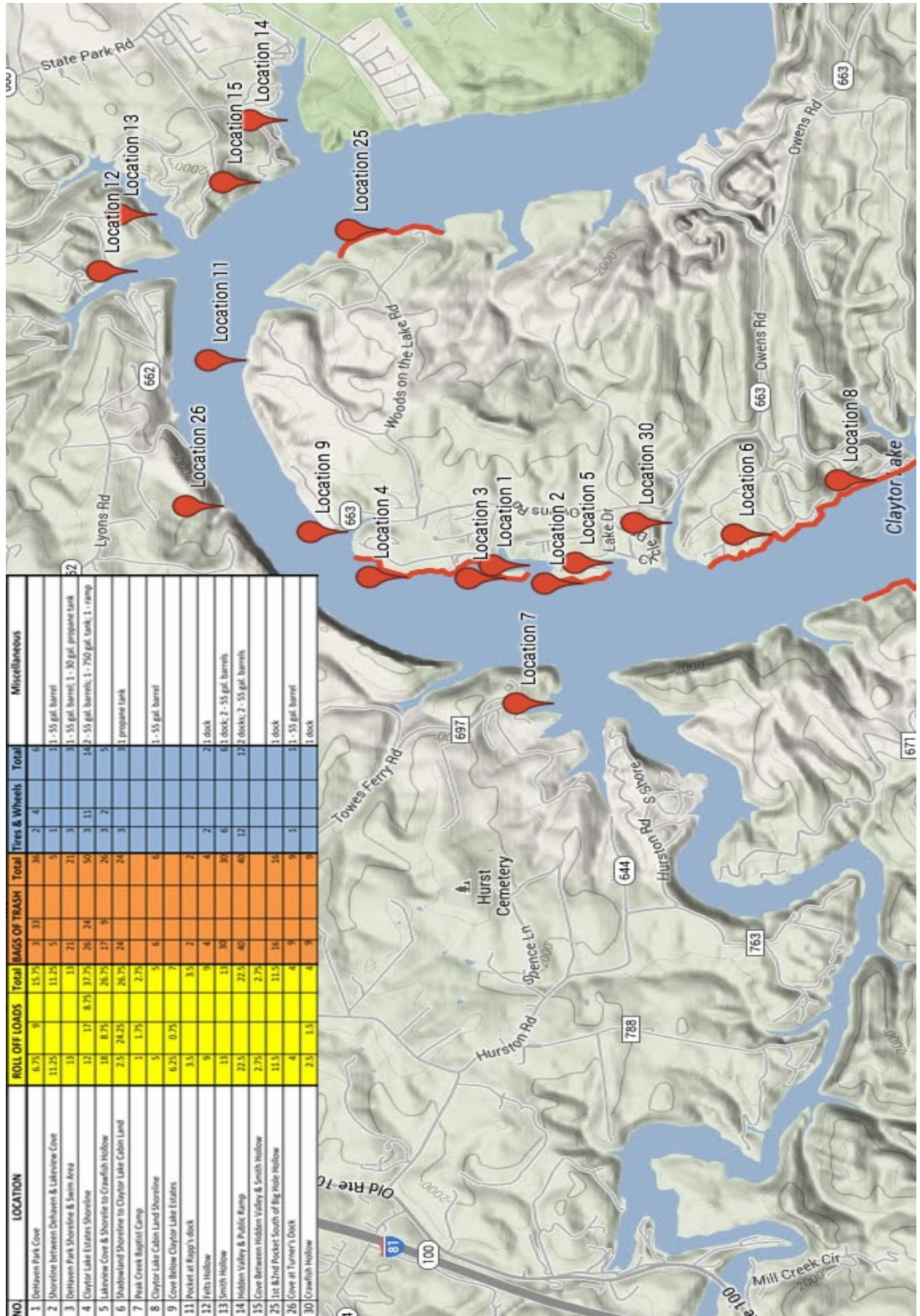
## 2014 Clean Up Projections

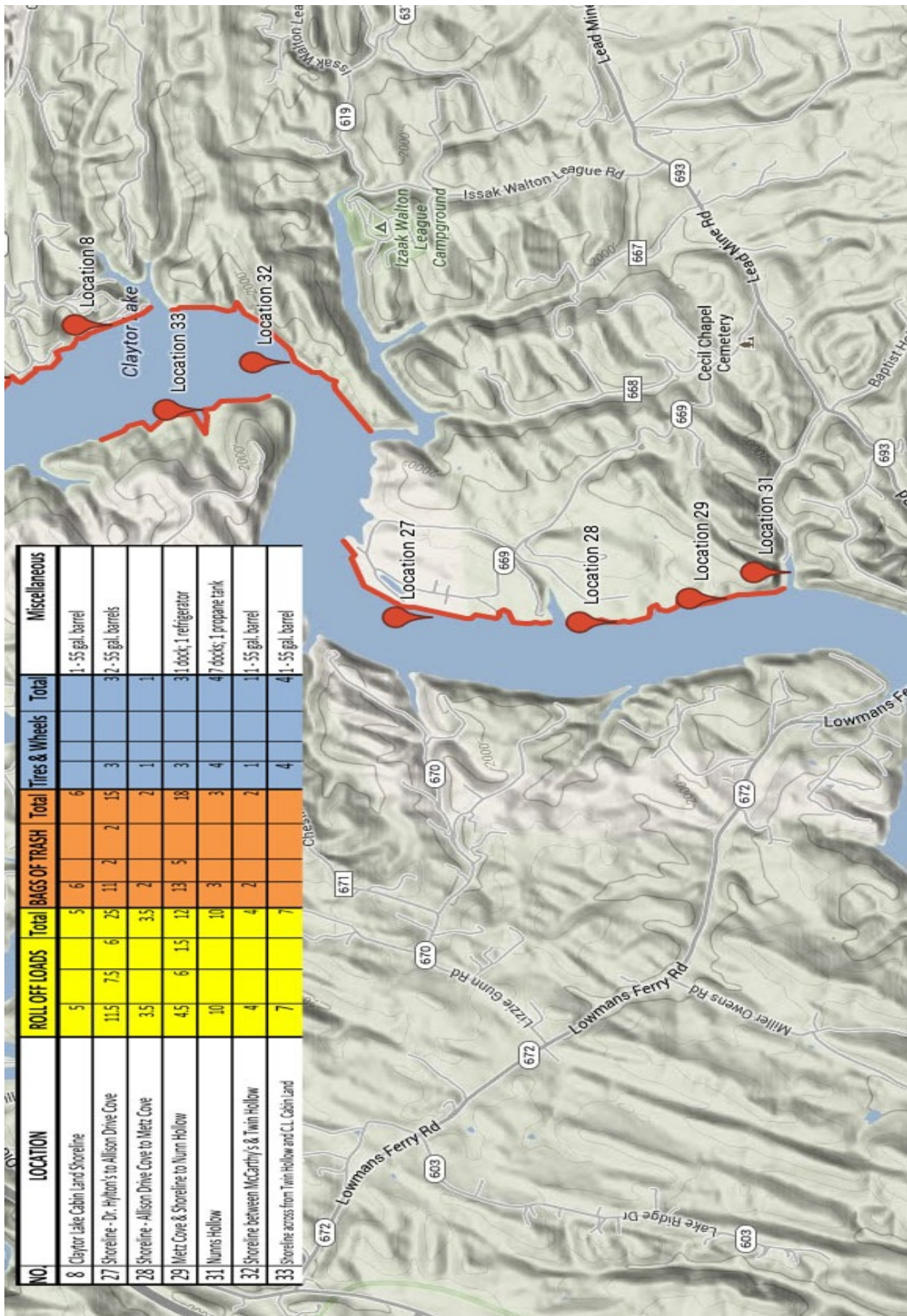
CATEGORY	AMOUNT
Salary & Wages	74,820.00
FICA	5,000.00
Insurance	12,069.00
Parts	3,000.00
Repairs & Labor	9,000.00
Supplies	2,500.00
Fuel	14,000.00
<b>Total:</b>	<b>120,389.00</b>





NO	LOCATION	ROLL OFF LOADS	Total	BAGS OF TRASH	Total	Tires & Wheels	Total	Miscellaneous
1	Dehaven Park Cove	6.75	9	15.75	3	33	4	
2	Shoreline between Dehaven & Lakewood Cove	11.25		11.25	5		1	1 - 55 gal. barrel
3	Dehaven Park Shoreline & Swim Area	13		13	21	3		1 - 55 gal. barrel, 1 - 30 gal. propane tank
4	Claytor Lake Estates Shoreline	17	8.75	17.75	26	24	11	14 - 55 gal. barrels, 1 - 750 gal. tank, 1 - ramp
5	Lakewood Cove & Shoreline to Crawfish Hollow	16	8.75	26.75	17	9	2	5
6	Shoalwood Shoreline to Claytor Lake Cabin Land	2.5	14.25	26.75	24	24	3	1 - propane tank
7	Peak Creek Baptist Camp	1	1.75	2.75				
8	Claytor Lake Cabin Land Shoreline	5		5	6			1 - 55 gal. barrel
9	Cove below Claytor Lake Estates	6.25	0.75	7				
11	Pocket at Rapp's dock	3.5		3.5	2		2	2 - 1 dock
12	Felts Hollow	9		9	4	2		
13	Smith Hollow	13		13	30	30	6	4 - 1 dock, 2 - 55 gal. barrels
14	Hidden Valley & Public Ramp	27.5		27.5	40	40	12	12 - 2 docks, 2 - 55 gal. barrels
15	Cove Between Hidden Valley & Smith Hollow	2.75		2.75				
25	1st & 2nd Pocket South of Big Hole Hollow	13.5		13.5	16	16		1 - dock
26	Cove at Turner's Dock	4		4	9	9	3	1 - 55 gal. barrel
30	Crawfish Hollow	2.5	1.5	4	9			1 - dock





2013 CLEAN-UP TOTALS

NO.	LOCATION	ROLL OFF LOADS		Total	BAGS OF TRASH		Total	Tires & Wheels		Total	Miscellaneous
1	DeHaven Park Cove	6.75	9	15.75	3	33	36	2	4	6	
2	Shoreline between Dehaven & Lakeview Cove	11.25		11.25	5		5	1		1	1 - 55 gal. barrel
3	DeHaven Park Shoreline & Swim Area	13		13	21		21	3		3	1 - 55 gal. barrel; 1 - 30 gal. propane tank
4	Claytor Lake Estates Shoreline	12	17	37.75	26	24	50	3	11	14	2 - 55 gal. barrels; 1 - 750 gal. tank; 1 - ramp
5	Lakeview Cove & Shoreline to Crawfish Hollow	18	8.75	26.75	17	9	26	3	2	5	
6	Shadowland Shoreline to Claytor Lake Cabin Land	2.5	24.25	26.75	24		24	3		3	1 propane tank
7	Peak Creek Baptist Camp	1	1.75	2.75							
8	Claytor Lake Cabin Land Shoreline	5		5	6		6				1 - 55 gal. barrel
9	Cove Below Claytor Lake Estates	6.25	0.75	7							
10	Claytor Lake State Park Cove	1.75	2	3.75	6		6	2	1	3	
11	Pocket at Rapp's dock	3.5		3.5	2		2				
12	Felts Hollow	9		9	4		4	2		2	1 dock
13	Smith Hollow	13		13	30		30	6		6	1 dock; 2 - 55 gal. barrels
14	Hidden Valley & Public Ramp	22.5		22.5	40		40	12		12	2 docks; 2 - 55 gal. barrels
15	Cove Between Hidden Valley & Smith Hollow	2.75		2.75							
16	Cove at Claytor Lake State Park Cabins	4.5		4.5	10		10	1		1	
17	Shoreline at APCO Cabin - Dam	4.75		4.75	2		2	3		3	1 dock; 1 - 55 gal. barrel
18	Behind Island at Dam	3.25		3.25	1		1	3		3	
19	Cove at Barton Farm			0							3 docks
20	Dublin Hollow			0							4 docks
21	Shoreline between Stevens & Dean's Hollows			0							1 dock
22	Ridpath Hollow			0							1 dock
23	Cook Hollow	1		1							
24	Texas Hollow	9.75		9.75	43		43	6		6	1 refrigerator; 1 large barrel
25	1st & 2nd Pocket South of Big Hole Hollow	11.5		11.5	16		16				1 dock
26	Cove at Turner's Dock	4		4	9		9	1		1	1 - 55 gal. barrel
27	Shoreline - Dr. Hylton's to Allison Drive Cove	11.5	7.5	6	11	2	15	3		3	2 - 55 gal. barrels
28	Shoreline - Allison Drive Cove to Metz Cove	3.5		3.5	2		2	1		1	
29	Metz Cove & Shoreline to Nunn Hollow	4.5	6	1.5	13	5	18	3		3	1 dock; 1 refrigerator
30	Crawfish Hollow	2.5	1.5	4	9		9				1 dock
31	Nunns Hollow	10		10	3		3	4		4	7 docks; 1 propane tank
32	Shoreline between McCarthy's & Twin Hollow	4		4	2		2	1		1	1 - 55 gal. barrel
33	Shoreline across from Twin Hollow and C.L. Cabin Land	7		7				4		4	1 - 55 gal. barrel
<b>TOTALS</b>		<b>210</b>	<b>78.5</b>	<b>16.3</b>	<b>305</b>	<b>73</b>	<b>380</b>	<b>67</b>	<b>18</b>	<b>0</b>	<b>85</b>